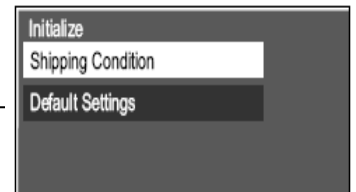
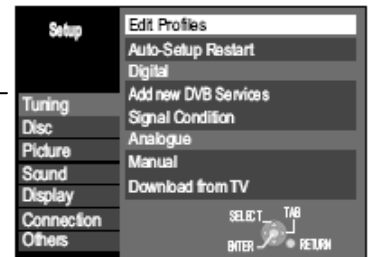
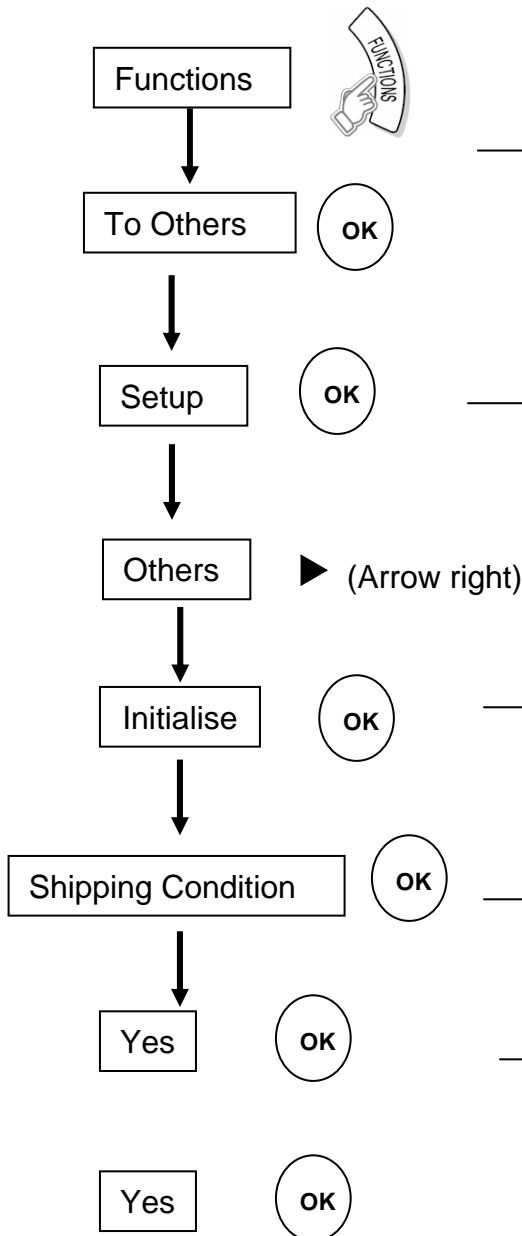


Shipping Condition

To reset the unit back to default settings as it left the factory, use Shipping Condition. All of the TV stations will be retuned, the time and date will be reset and all other settings changed by the user will be reset.

Select Press

You will see



The TV screen will go blank indicating that all settings have been reset. Disconnect the unit from the mains for a few seconds before reconnecting and switching on.